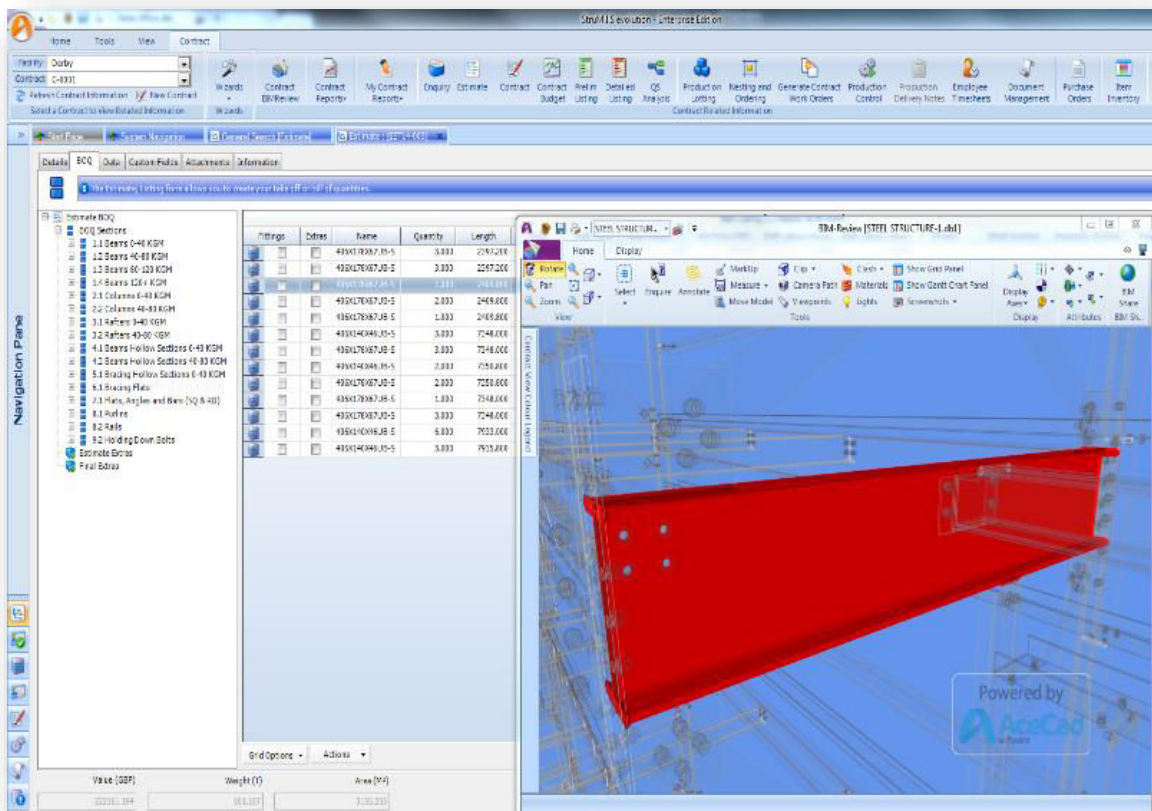




STRUMIS

FEATURES & BENEFITS

This document presents the complete features and benefits of STRUMIS fabrication management system, highlighting several exceptional features and showing our commitment to the steel industry.



About STRUMIS LTD

Why collaborate with STRUMIS LTD?

STRUMIS Benefits

- A Unique Solution for steel Fabricators
- Prepare accurate quotes and control your budget
- Visualize your project in 3D and in real-time with BIMReview
- Take full control of your Inventory and CE Marking
- Eliminate paperwork with Suppliers and Procurement
- Plan ahead with Long Range & Detailed Planning
- Optimize Production and monitor progress in real-time
- Manage all Project Documents & Data
- A safe & rapid return on your Investment

STRUMIS Features

- Enquiries and Estimating
- Purchasing and Suppliers
- Document Management
- Contract Management
- Customers and Sales
- QS Analysis
- Items and Inventory Control
- Production Control
- Production Planning
- Budget Control

STRUMIS Exceptional Features

- MULTI-FACILITY
- PLATE GIRDER MANAGEMENT
- BARCODING
- PRODUCTION CONSOLE
- MOBILITY App
- BIMReview
- STRUCNC
- CAD Integration with steel detailing systems
- Integration with plate nesting systems
- Partnership with all major machinery vendors
- Access STRUMIS from any location

Our Technical Team

- Training
- Technical Support

The Road Ahead

About STRUMIS LTD

A Company Dedicated and Committed 100% to serving the Steel Fabrication Industry

The story of the STRUMIS Management Information System started in 2000, with the acquisition of GoData. Since then the company has applied its own manufacturing knowledge, expertise and programming and incorporated the needs of thousands of end users to develop the STRUMIS product to deliver best practice processing for the steelwork construction industry today, utilizing the very latest technology providing our customers with unrivalled improved efficiencies, increased productivity and ultimately improved profitability.



STRUMIS Ltd is 100% committed to the steel fabrication business, acquiring in-depth and extensive specialist knowledge and skills that we continuously implementing into all our software and deliver to our customers.

STRUMIS Ltd is an active member of trade organizations around the world including but not limited to BSCA (UK), AIS (Australia), AISC (USA), CISC (Canada), LGSFA (Light Gauge Steel Frame Association), SCI (Steel Construction Institute), RIDBA (Rural & Industrial Buildings Association) & IMCA (Mexico) trade associations.



STRUMIS LTD maintains a close collaboration with all major companies providing CNC Machinery, 3D CAD/CAM software and Accounting Programs to steel fabricators. These partnerships provide unique interoperability, seamless flow of information and bidirectional project data links thus bringing enormous cost savings to our customers.

Our flagship product, STRUMIS Fabrication Management Software, is the "Industry Standard" used by more than 20,000 users, globally in 65 Countries and it is available in 15 languages. Our client base includes some of the largest fabricators in the world as customers like Severfield, CANAM, Murray & Roberts, Waiward Steel, Schuff Steel, ASSENT, Cleveland Bridge, ASTRON Buildings etc.



Why collaborate with STRUMIS LTD?

Because STRUMIS LTD:

- ✓ **Is 100% committed in serving the steel industry**
- ✓ **Has more than 30 years of software expertise**
- ✓ **Keeps up with the latest trends, standards and automations**
- ✓ **Has partnerships with all major CNC machinery and CAD/CAM companies**
- ✓ **Is a global leader in steel fabrication management systems**
- ✓ **Has a highly skilled technical team for training and support**
- ✓ **Provides an entire solution - ready for growth and diversification**

STRUMIS BENEFITS

A Unique Solution for steel Fabricators

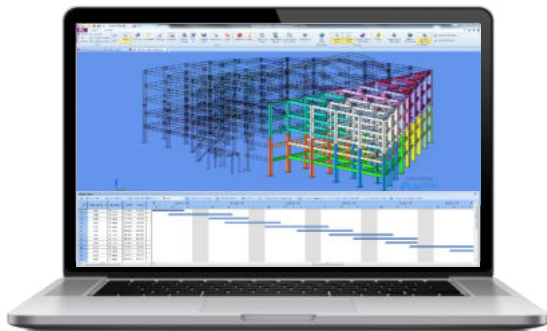
STRUMIS streamlines and simplifies all of the steelwork projects processes and resources, providing direct cost and time saving benefits to all steps of steel fabrication.

STRUMIS is by design a centralized system dedicated for steel fabrication and all business resources and processes from Estimating to Erection receive its direct benefits.

STRUMIS addresses immediately and effectively the most common business issues at any size of steel fabricator:

- ✓ **Reduces Cost & Improves Profits**
- ✓ **Increases Productivity & Efficiency**
- ✓ **Reduces Errors & Minimizes Scrap**
- ✓ **Provides Full Traceability & Legislation Compliance**
- ✓ **Provides real-time Project Management and Cost Analysis**

Prepare accurate quotes and control your budget



- ✓ Prepare your project estimate in minutes
- ✓ Import steel from any electronic format
- ✓ Review win/lost projects for evaluation
- ✓ Use simple or advanced estimation approaches
- ✓ Define your own costing rules
- ✓ Compare estimates with budgeted values

STRUMIS BENEFITS

Visualize your project in 3D and in real-time with BIMReview



- ✓ Full BIM compliancy
- ✓ View Assemblies and Parts within model
- ✓ Identify Project Status
- ✓ Real-Time Updates from workshop & erection site
- ✓ Share data & model with your clients

Take full control of your Inventory and CE Marking



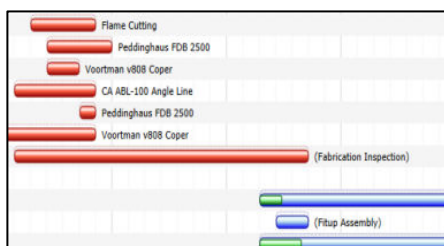
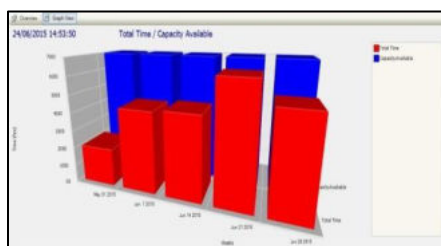
- ✓ Manage all steel and non-steel material and consumables in various storage facilities & locations.
- ✓ Achieve full traceability of Steel with Heat/Cast Ref Test Certificates ISO9001, CE Marking & FPC
- ✓ Easily manage inventory transactions.
- ✓ Store and re-use off-cut remnants, with all associated Documentation & Certificates.

Eliminate paperwork with Suppliers and Procurement



- ✓ Reduce wastage & minimize steel costs using the Linear Bar & Plate Nesting Engines of STRUMIS.
- ✓ Manage effectively preferred supplier & stockists, with automated RFQ's
- ✓ Eliminate paperwork by issuing automatic purchase orders & receipts.
- ✓ Generate detailed reports for distribution with EDI Links, quickly & easily.
- ✓ Automatically update your accounting and/or ERP records with STRUMIS links to 3rd Party systems.

Plan ahead with Long Range & Detailed Planning



- ✓ Prevent future bottlenecks in production using Long-term project planning
- ✓ Achieve resource efficiency using capacity scheduling.
- ✓ Use optimized part routing based on the rules of the workstations
- ✓ Use Bar-Code in production stages and Retrieve easily employee time sheets

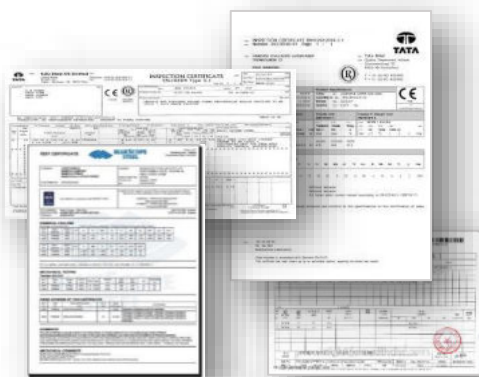
STRUMIS BENEFITS

Optimize Production and monitor progress in real-time



- ✓ Automatic production part routing optimises workload allocation
- ✓ Set Optimised Cut/ Drill times per machine & part for scheduling
- ✓ Send nested bar and piece information directly to machines
- ✓ Receive automatic feedback for real-time status
- ✓ Get real-time progress with bar-code progression & tracking
- ✓ Get labour time recording with Production Console on tablets
- ✓ Use mobile application for iPhone and Android devices for tracking
- ✓ Apply your own mix & match of tracking methodology

Manage all Project Documents & Data



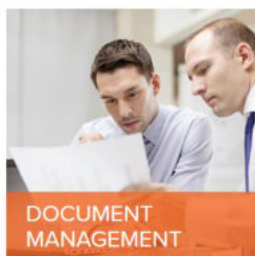
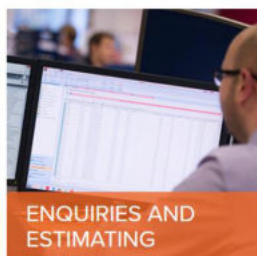
- ✓ Archive all contract documents in a single location
- ✓ Store, view & print any document
- ✓ Monitor and control all Revisions
- ✓ Control & Management of RFI's
- ✓ Issue Document Transmittals in a few seconds
- ✓ Track Status – check, approved etc.
- ✓ Fabrication drawings, NC files, test certificates etc.

A safe & rapid return on your Investment

- ✓ **Full Traceability**
- ✓ **Better Quality**
- ✓ **Elimination of Errors**
- ✓ **Reduced Costs**
- ✓ **Lower Overheads**
- ✓ **Increased Efficiency**
- ✓ **Improved Productivity**
- ✓ **Greater Profitability**



STRUMIS FEATURES



Enquiries and Estimating

- Management of Enquiries showing win/lose values for weight, surface area and cost value
- Wizard Import from any electronic source, i.e. 3D CAD/BIM authoring systems or Microsoft® Excel
- Rapid material input/take off via inbuilt library
- Worldwide Hot and Cold Rolled Steel Section Catalogue incorporating material lengths and costs
- Embedded autocut material optimizer for accurate calculation of waste
- User definable templates for different types of fabrication i.e. stairs or portal frames, etc.
- Parametric labor and connection costing
- Quick and easy tools for rapid/on the fly data entry and creation
- Allows for loading of standard estimate inclusions, e.g. treatments or transport, etc.
- Batch updating of materials costs and rates, i.e. fluctuating material prices
- Quotation generation and detailed analysis reporting
- View 3D CAD/BIM files in BIMReview and any associated CAM drawings

Purchasing and Suppliers

- Purchasing and supplier materials database.
- Wizard driven - linear and plate nesting/multing/Optimisation
- Nesting incorporating multi-suppliers, bevel nesting, remnant nesting and butt welding
- Visual nest representation and analysis
- Request for Quotation (RFQ) and saved nest retrieval
- Electronic Data Interface (EDI) with Suppliers
- Automated Purchase Order generation
- Purchase Order receipts enables good inwards management and invoice reconciliation
- Materials Classification, facilitating CE compliance, test certificate/cast reference, returns, damaged goods, etc.
- Return to supplier for damaged or unwanted goods

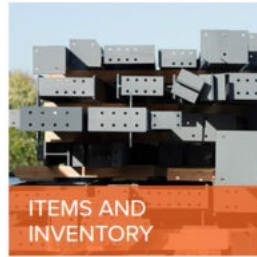
Document Management

- Instant access to all project data
- Document management database
- Document import wizard
- Document search and task automation
- Document transmittal wizard including tracking
- Request for Information (RFI) wizard
- View and print any document from anywhere inside STRUMIS such as fabrication and NC files

Contract Management

- Key contact details and project information such as CE Marking
- Import prelim or advanced material requirements
- Detailed listing feature allows import of any electronic format and allows for automatic revision control
- View 3D model for visual status of all pieces and fabrication drawings
- QS Analysis feature for breakdown of project by cost versus sale values
- Contracts Budget for breakdown of project estimate versus actual costs

STRUMIS FEATURES



Customers and Sales

- Sales invoices automatically created at milestones along the contract.
- Sales invoices created at defined production stages.
- Real-time comparison of budget to expenditure to sales for profitability visibility.
- Automated common tasks.
- 3D visual of project production marks and invoices to date.

QS Analysis

- QS Analysis feature for breakdown of project by cost and sales values
- Breakdown of project estimate versus actual Contract Budget
- Facilities for project cash flow monitoring
- Benchmark analysis for business performance
- Revision and Variation Control

Items and Inventory Control

- Complete inventory management system including non-steel items like welding wire, gas, grinding disks
- Multi location management including supplier sites or materials on order
- 'As received' cross checking with purchase orders
- Certification/reference storage against materials
- Control of stock levels and effective dates, minimum stock levels reporting
- Remnants return back to stock or free inventory
- Item status for historical trend analysis
- Detailed inventory transaction reporting
- True plate shape remnant visible in inventory

Production Control

- Bespoke workflow processes such as cutting/drilling, fabrication, welding, inspection, painting, dispatch, at site.
- Automated generation of stockyard picking lists and cutting lists
- Automated routing of workflow through interrogation of listing and NC data
- Automated work to list generation and/or post processing and delivery of CAM/NC data to specific machine formats.
- Integrated STRUCNC CAM/NC editing suite.
- Production phasing, lotting and Production Bundles to satisfy each department priority.
- Process timing generation and labour time recording.
- Piece Tracking utilizing Bar Coding, Production Console and/or Automated Workstation Feedback.
- Bar Coding delivers semi-automated individual piece monitoring.
- Production Console available as a touch screen interface.
- Workstation and machine automated feedback for several CNC manufacturers.
- Production overview with real time visual piece tracking in a 3D Tekla model.
- Automated production delivery notes.

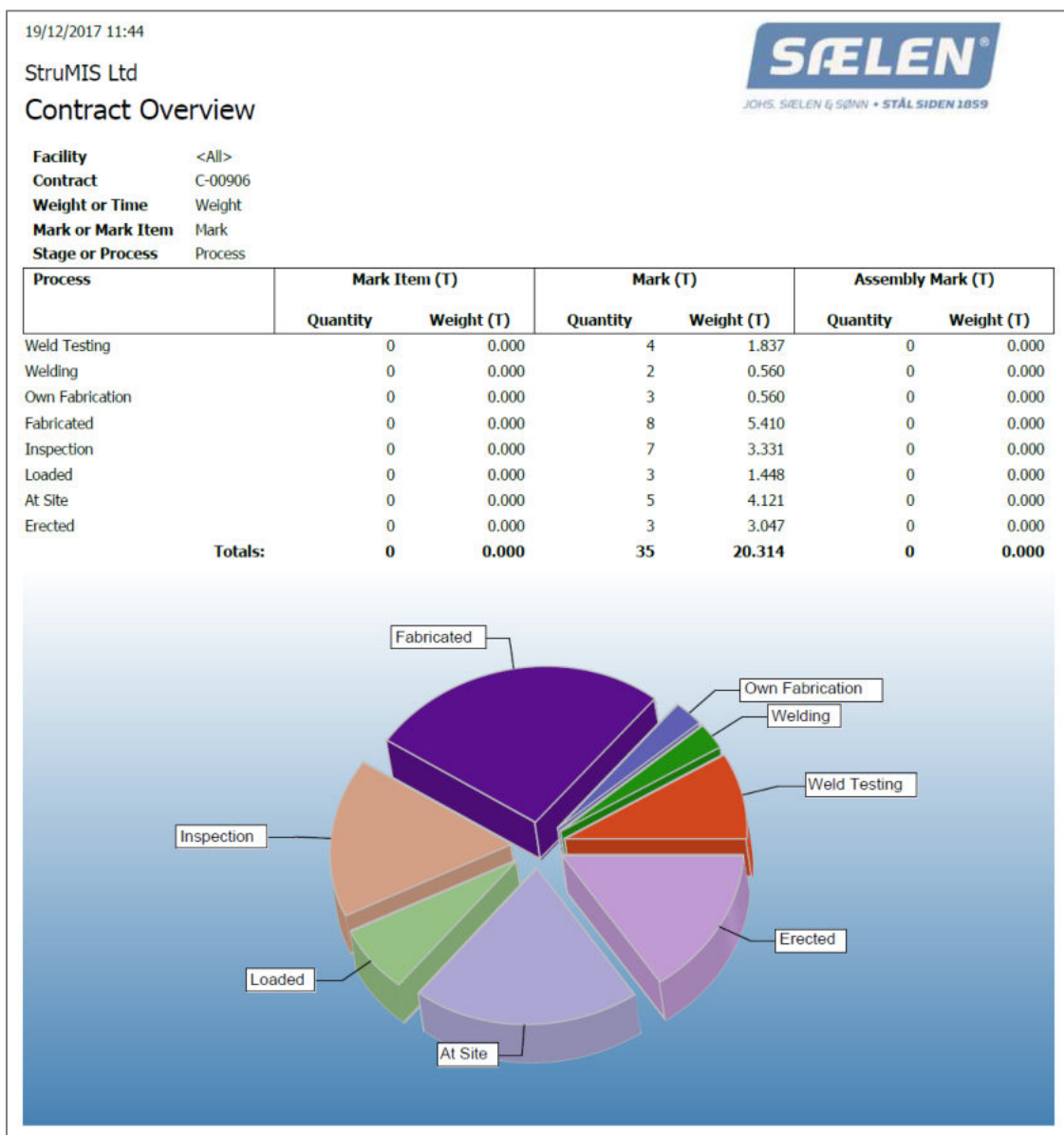
STRUMIS FEATURES

Production Planning

- Long Range Planning – allows high-level overview of production facility resources for sales and manufacturing personnel
- Detail Planning – provides granular detail of workshop machines and employees resources and workloads with calendars of standard working weeks with holidays and machine maintenance periods.

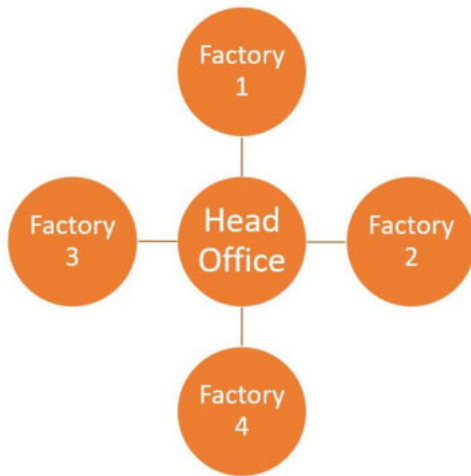
Budget Control

- Real-time comparison of budget to expenditure to sales for profitability visibility.
- Estimate versus Actual Committed Project Costs
- 3D visual of project production marks invoiced to date.
- Links to 3rd party Accounting Programs



STRUMIS EXCEPTIONAL FEATURES

MULTI-FACILITY



STRUMIS allows for multiple facilities. This means that a business with more than one production facilities can use STRUMIS to monitor all its procurement, storage, production and shipping for all contracts and for every facility.

STRUMIS EXCEPTIONAL FEATURES

PLATE GIRDER MANAGEMENT (BUILT-UP BEAMS)

This feature takes bespoke/custom plate girders, say 900x300x120 kg/m a totally custom section, which you cannot buy from suppliers or steel mills.

StruMIS imports this new custom section size then instantly creates a new section in the StruMIS steel section library (UB 900x300x120).

Then StruMIS splits the new section/girder in to 3 separate parts, top flange, bottom flange, web plate. (Users can configure the root face gaps and type of weld required to make the custom girder).

These 3 parts are then made separately in the workshop and once complete they are imploded back together to re-create the custom plate girder PG 900x300x120.



STRUMIS EXCEPTIONAL FEATURES

BARCODING

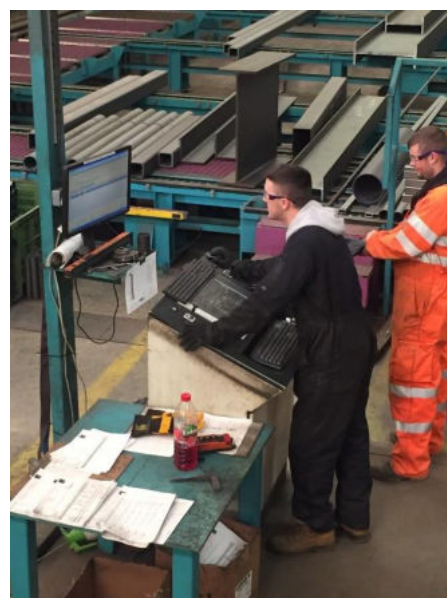
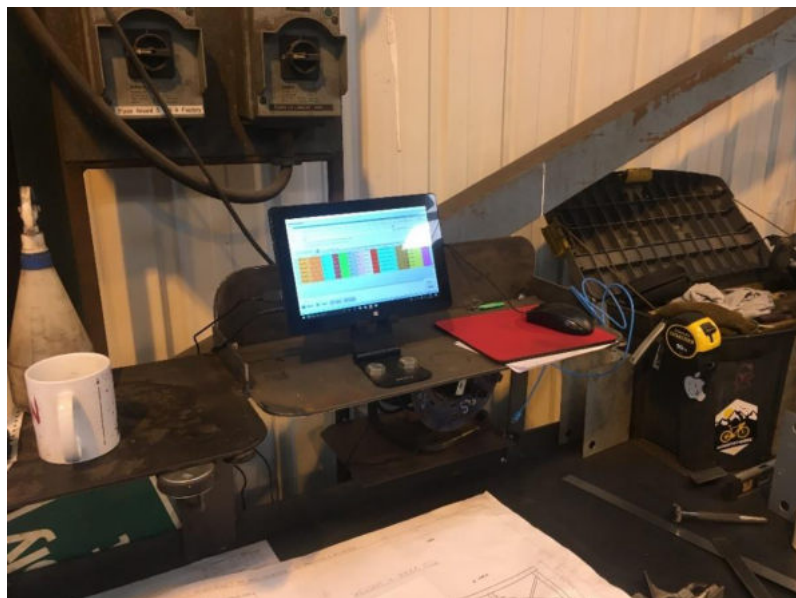
- Record production progress of assemblies, by process, in real time
- Record contract hours by process and employee
- Capture date, time, process, employee and shift information in Pre-Fabrication, Fabrication, Painting,
- Inspection, Welding, Loading, Erection
- Tracking and Traceability - which pieces are at each process
- Traceability for loading
- Exchange bar ability.
- Print barcode labels for materials to be loaded.
- Quickly scan barcodes to add an assembly to a load.
- RF Barcoding can be used to record the inspection result of each piece.



STRUMIS EXCEPTIONAL FEATURES

PRODUCTION CONSOLE

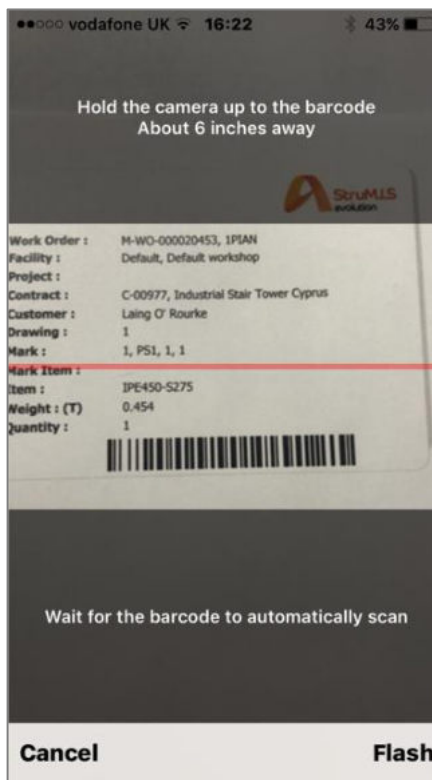
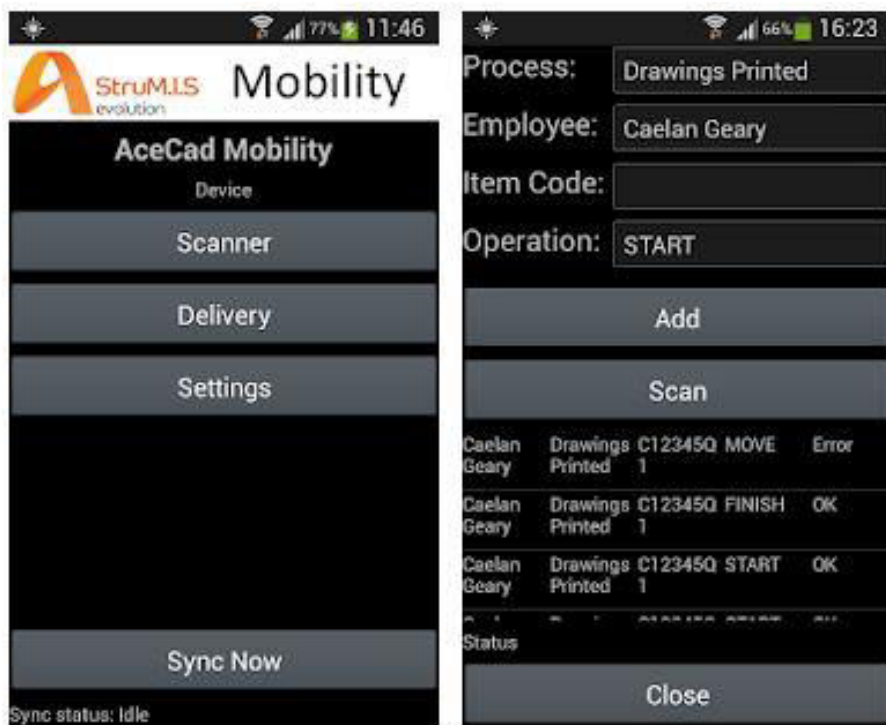
- Shop-floor-friendly interface
- View and update the fabrication status of items, record timesheets, view drawings and run critical reports.
- Instantly view what's left to do by any combination of assembly marks, sequences and lots; assembly types, tasks and work areas
- Quickly and simply progress the workflow by employee and part
- Immediately see all jobs assigned to any user
- Prioritizes work flow and views by priority
- Update and move component parts through the production progress
- Update erection progress - including timings and employee visibility
- View what's left to do by any combination of assembly marks, sequences and lots, assembly types, tasks and work areas
- Convenient Exchange Bar: substitutes an allocated exchange bar, if at the base of the stack, for a readily accessible equivalent bar
- View the shipping status, what's left to load and what's left to ship for assemblies shipping to sub-contractors (i.e., galvanizer) or to the job site
- View drawing information, CAM/DSTV files - and check dimensions, revisions, 3D Cam
- Specify off cut length -automatically goes into stock inventory



STRUMIS EXCEPTIONAL FEATURES

MOBILITY App

The STRUMIS Mobility App (available for Android and iOS) collects, production & site data, piece tracking and contract hours and synchronizes with STRUMIS. It is free of charge and can turn any mobile phone into a barcode scanner.



STRUMIS EXCEPTIONAL FEATURES

BIMReview www.bim-review.com

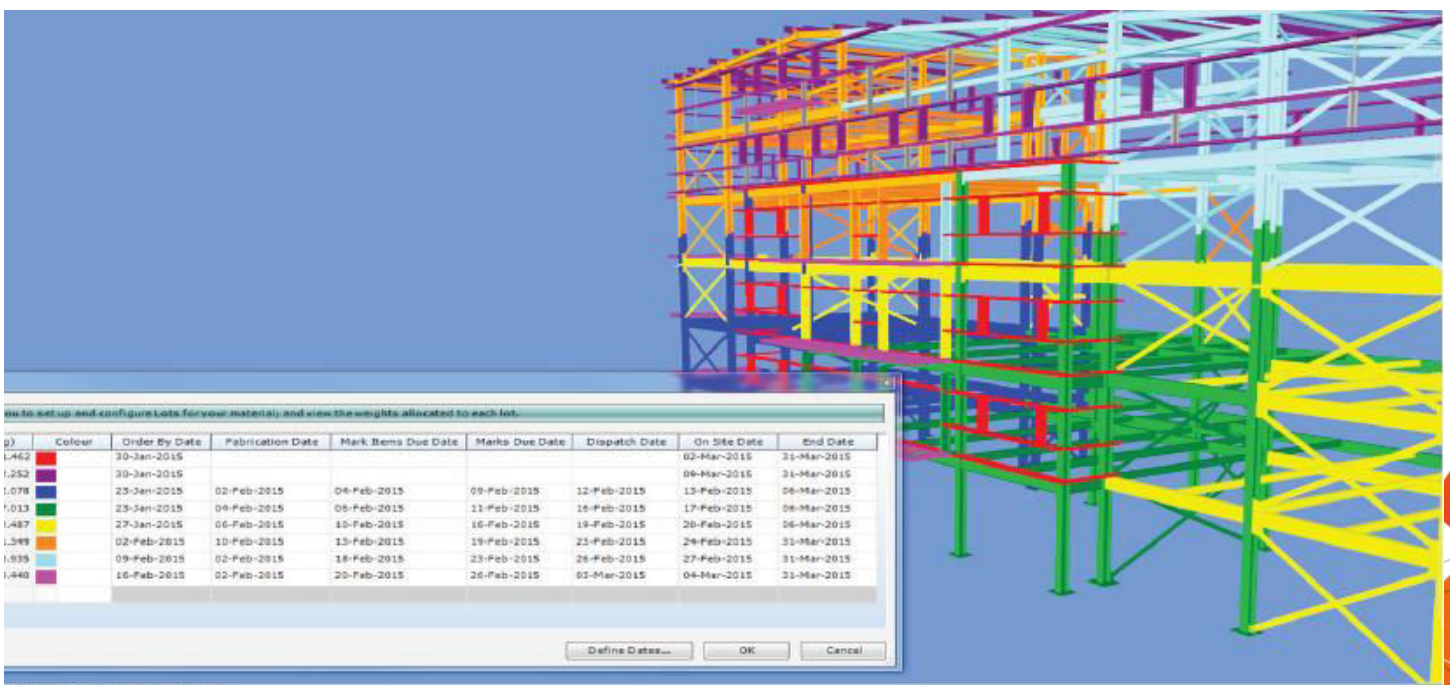
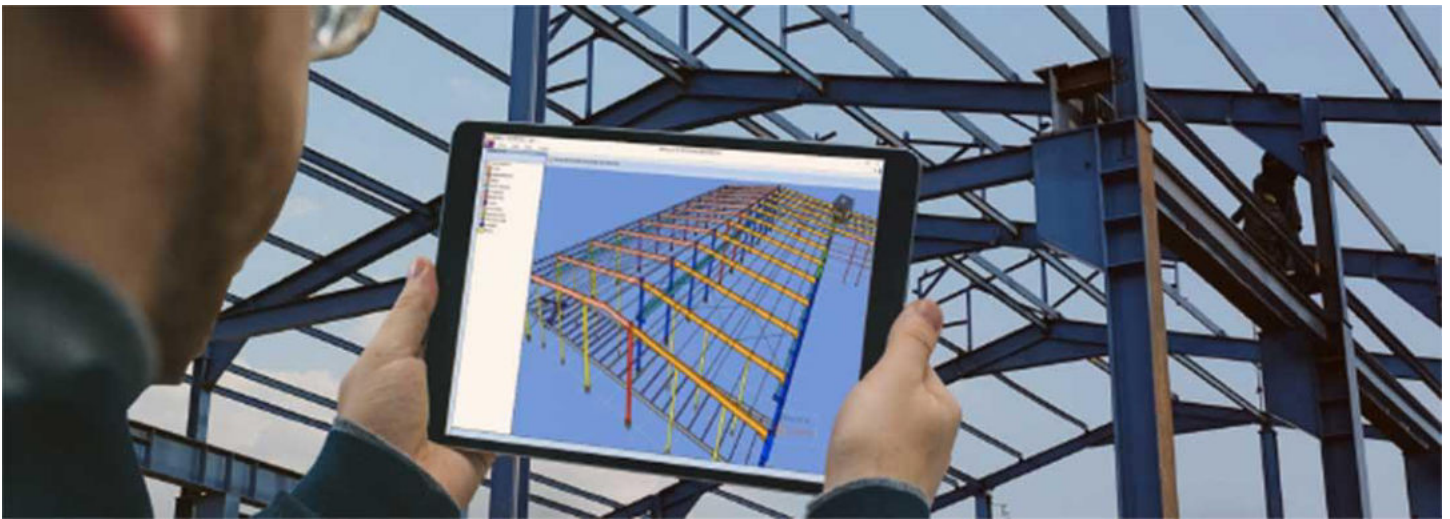
STRUMIS comes with BIMReview 3D Model Viewer completely free of charge.

BIMReview is a powerful and extremely useful 3D model viewer, through which the model can be viewed and using the permanent connection to the STRUMIS database colour codes many different meaningful views such as which assemblies have been fabricated, welded, painted, dispatched, invoiced and erected automatically with no human input.

Importing of IFC models such as Revit and Tekla

Clash Detection Feature to check project connections do not include clashes and highlights any clashed connections if found.

Enquiry, Annotation, BIM Share, Clips, Measurement Tool, and Video Maker features.



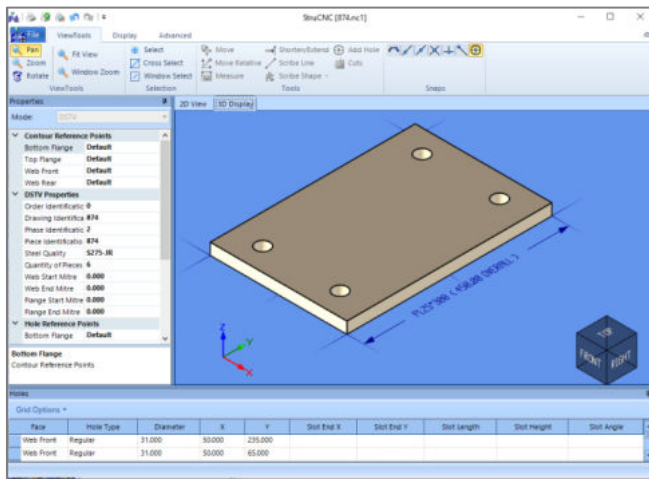
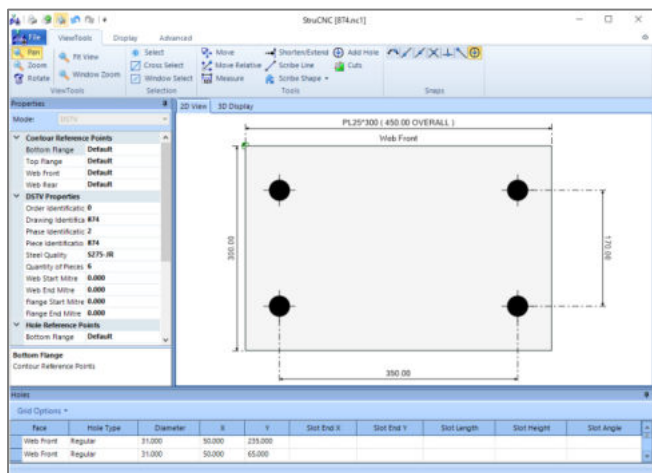
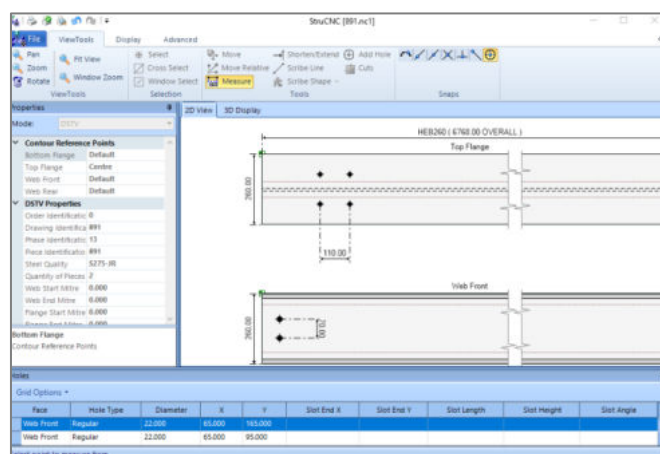
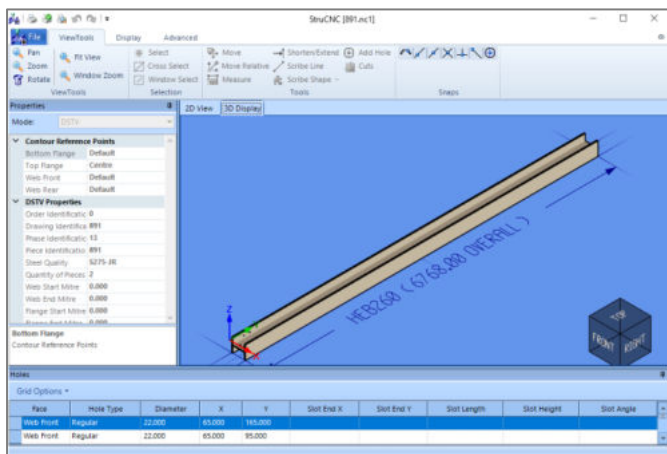
STRUMIS EXCEPTIONAL FEATURES

STRUCNC

STRUMIS comes with a free version of STRUCNC.

STRUCNC is a tool for creating and editing 2D/3D viewing of CAM files, through which any steel item with its cutting and drilling operations can be viewed and checked.

STRUCNC also provides the ability to edit CAM files for last minute modifications, such as adding galvanizing holes. Functionality includes viewing tools, edge limit controls, the creation of cuts, holes and scribes.



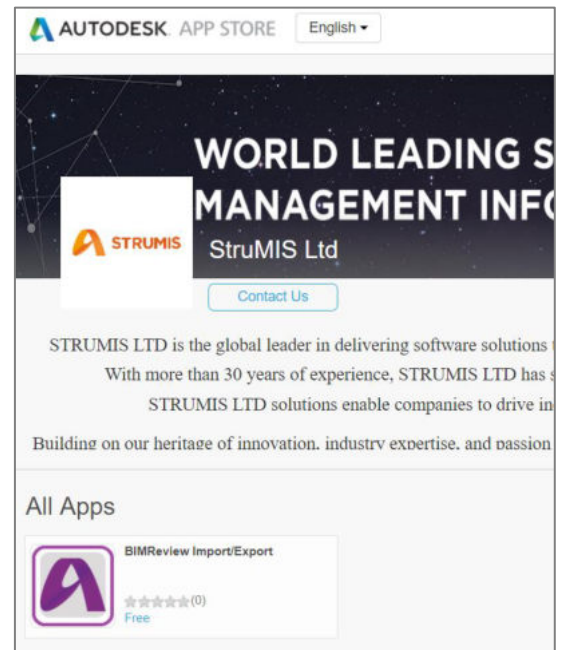
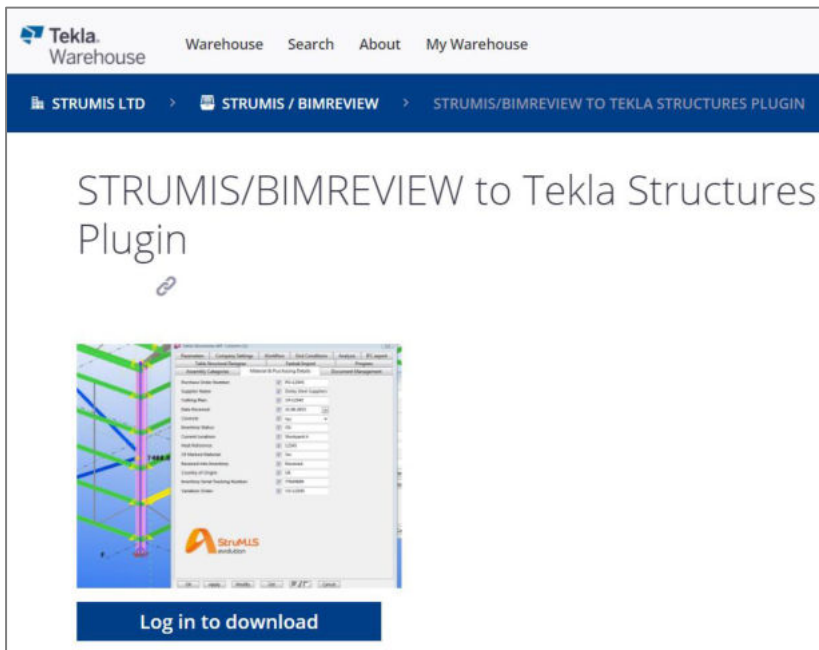
STRUMIS EXCEPTIONAL FEATURES

CAD Integration with steel detailing systems

Import every last nut, bolt and washer with STRUMIS unique and synchronized bi-directional integration with the industry's leading CAD systems. Critical information such as purchasing, fabrication and delivery status is automatically fed back into the Tekla model for improved decision making.



All major steel detailing systems and STRUMIS Ltd offer free of charge add-ons for exporting contract data to STRUMIS complete 3D models, Fabrication drawings, CAM/NC files and material lists.



STRUMIS EXCEPTIONAL FEATURES

Integration with plate nesting systems



Hypertherm
SHAPING POSSIBILITY

Products Learn Support Our company

Home > Learn > Virtual events > On-demand events >

Search

Categories

- Plasma cutting (36)
- Nesting software (10)
- Software (9)
- Motion controls (4)
- Operational efficiency (3)
- Waterjet cutting (2)
- Laser cutting (1)

Popular tags

- ProNest software (18)
- CAD/CAM software (11)
- Air plasma (9)
- HD plasma (8)
- Cut quality (6)
- CNC table (5)
- Preventive maintenance (5)
- Productivity (5)
- Bevel cutting (4)
- Gouging (4)

ProNest integration with STRUMIS

Posted on 28/03/2017 in Webinars, Software

SHARE THIS

STRUMIS / ProNest Integration

- Integration benefits
 - Exchange job information (i.e. parts and plates) in real time
 - Reduce working capital through inventory management
 - Time savings and manual error reduction through manual intervention
 - Run a fully data driven operation
 - Reduce order to ship time through job automation
 - Achieve a higher percentage of customer orders

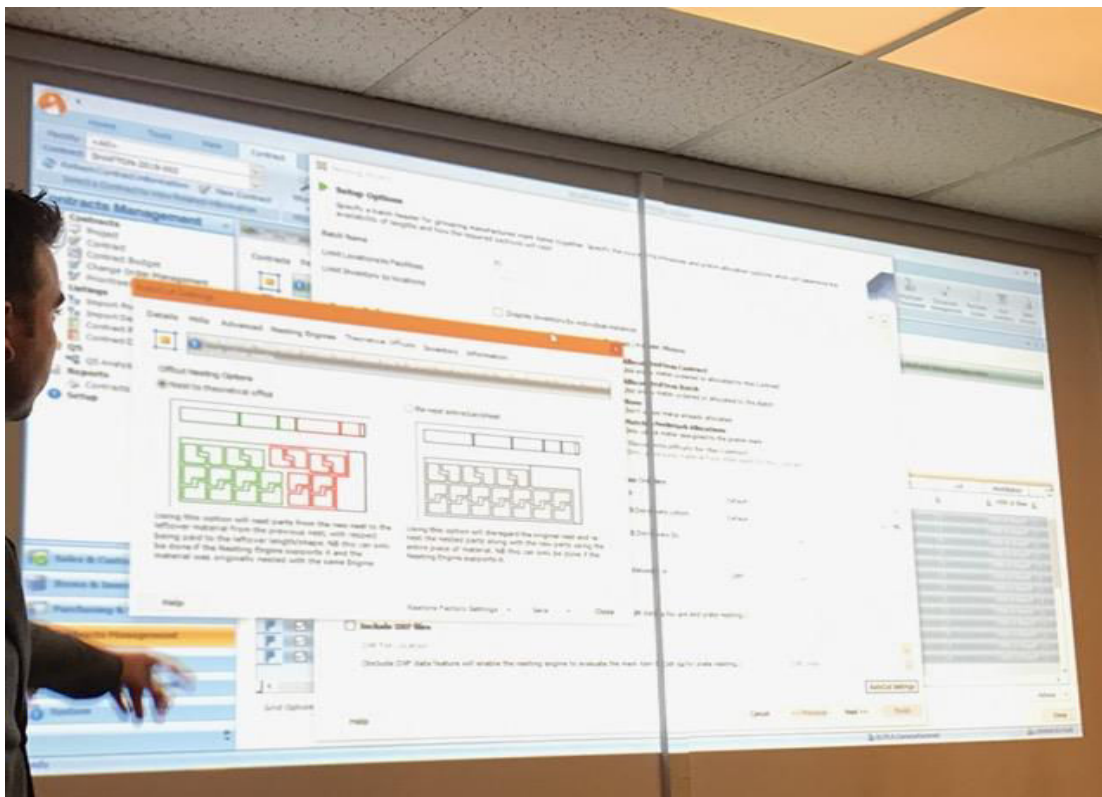
Learn how to reduce waste and maximize material efficiency during this webinar which focuses on how STRUMIS interacts with Hypertherm's ProNest® CAM nesting software.

STRUMIS – SIGMANEST Bi-directional functionality for Plate Nesting.

© 28th March 2017 | Uncategorized | admin

```

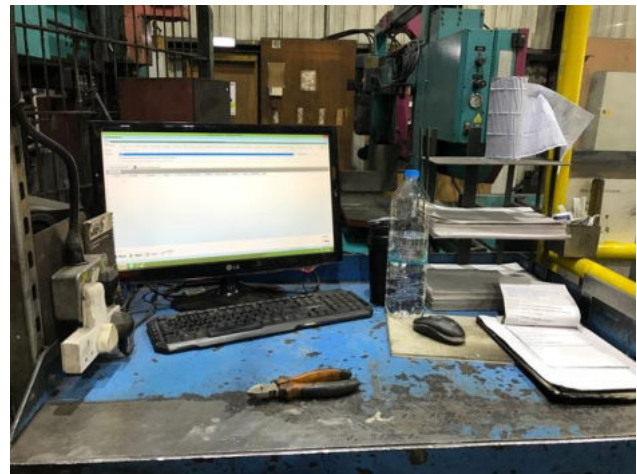
    graph TD
      subgraph STRUMIS
        S1[STRUMIS]
        S2[STRUMIS]
        S3[STRUMIS]
      end
      subgraph SIGMANEST
        G1[SIGMANEST]
        G2[SIGMANEST]
        G3[SIGMANEST]
      end
      S1 --> G1
      G1 --> S2
      S2 --> G2
      G2 --> S3
      S3 --> G3
      G3 --> S1
  
```



STRUMIS EXCEPTIONAL FEATURES

Partnership with all major machinery vendors

STRUMIS' bi-directional links with CNC machines enables fabricators and detailers to make quick, informed decisions to minimize cost and disruption, by seeing real-time status for materials and manufacturing progress.



StruMIS

Workstation feedback

Feedback settings

To activate a workstation to check for feedback files automatically, open the appropriate workstation and check the option 'Check for Workstation feedback' on the Feedback Settings tab of the Production Workstation form.

Details Rules Output File Options **Feedback Settings** Feedback Transformation Script Notes Calendar Custom Fields Information

The workstation feedback settings form allows you to specify the settings for a workstation feedback import.

Check for workstation feedback

File Extension:

Default Employee:

Workstation Feedback Path:

Mappings (* = Mandatory Fields)

* Contract	[Column2]	Duration (mins)	[Column5]	Mark Item GUID	<input type="text"/>
* Mark Item	[Column1]	Start Time	[Column7]		
* Phase/Zone	[Column4]	Stop Time	[Column8]		
* Log/Load	[Column3]	Production Process			
* Quantity	[Column5]	Employee			

Column1	Column2	Column3	Column4	Column5	Column6	Column7	Column8
P1253	3521-C	L63	PH-62	1	7.4	2016-08-09 18:06	2016-08-09 18:13
P4822	3521-C	L63	PH-62	1	5.866666666666666	2016-08-09 18:15	2016-08-09 18:21
P4644	3521-C	L42	PH-32	1	31.4	2016-08-09 16:33	2016-08-09 17:04
P3722	3521-C	L42	PH-32	1	6.35	2016-08-09 17:05	2016-08-09 17:12
P4222	3521-C	L42	PH-32	1	3.655555555555555	2016-08-09 17:20	2016-08-09 17:24

STRUMIS EXCEPTIONAL FEATURES

Access STRUMIS from any location

STRUMIS tailored options give you easy access to STRUMIS from anywhere, on any type of device, with the best solution to suit your specific needs. You can access STRUMIS from your smartphone, tablet, laptop, or your home computer.

	Production Console	RF Barcoding	Batch Barcoding	STRUMIS Mobility App	STRUMIS	
Summary	Accesses and updates production information without consuming a STRUMIS license.	Collates and tracks barcode information (piece, person, process) in real time.	Collates batch barcode information - without a connection and updates (with connection) once load finished	App that collates and tracks barcode information, synchronizing with STRUMIS to maintain real time information	Full service STRUMIS	
Ideal for:	Labour Time Recording - in shop / on site	Tracking pieces in shop and on site	Tracking where there's limited connectivity	Tracking- anywhere in real time.	Anywhere	
No network Connection			✓	✓		Ability to collect information wherever
WebXML	✓	✓	✓	✓	✓	Instantly provides you - and (with granular permissions) other project stakeholders - instant access to STRUMIS data from virtually any location.
VPN	✓	✓	✓	✓	✓	For security and data integrity, provides access to STRUMIS and other network folders.
Remote Desktop	✓	✓	✓	✓	✓	Gives secure access to STRUMIS from any internet access device - doesn't need STRUMIS installed.

Our Technical Team

STRUMIS LTD supplements our software solutions with a range of services including Technical Support and Training to ensure that our clients always experience maximum benefits from our software.

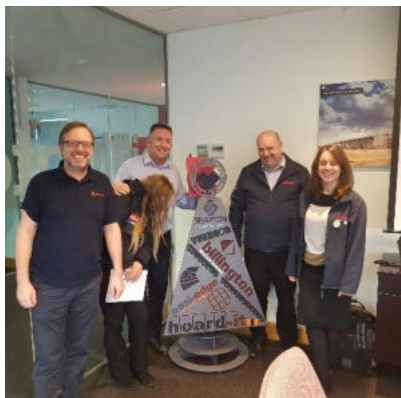
Training

STRUMIS LTD offer a skilled international team to train and implement our software either at your facility or online for maximum benefits. All our training engineers are industry professionals in their own right and as a global training team combined are able to offer hundreds of years of industry experience ensuring a smooth and professional delivery of our software ensuring the quickest return on investment.

All new clients are invited to complete a comprehensive pre-training questionnaire. Once completed, our training engineer can determine a bespoke implementation plan training course in line with our clients' requirements and methodologies. Our training is modular with each module consisting of a separate in-depth training course that incorporates the dynamic links that exist between modules, minimizing training time and maximizing work force productivity.

Technical Support

Our support team have many years' experience working in the steelwork industry and many have used STRUMIS in their previous roles. The combination of industry experience and STRUMIS experience provides our clients around the world the opportunity to speak directly with an industry professional 24/7 and 365 day each year.



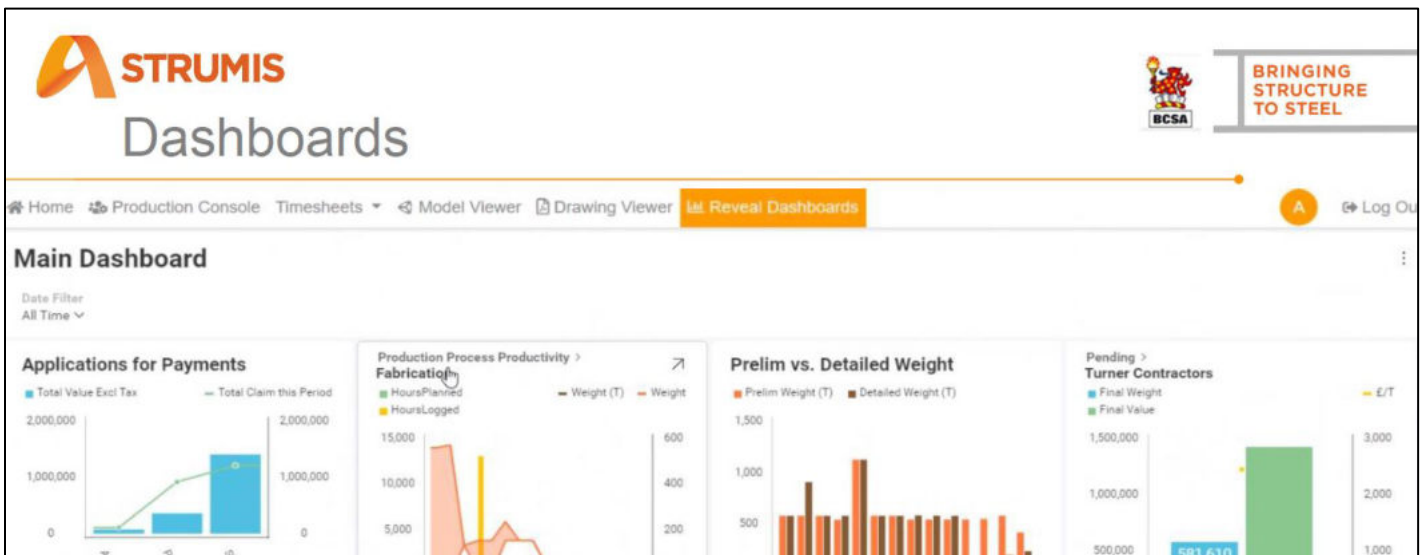
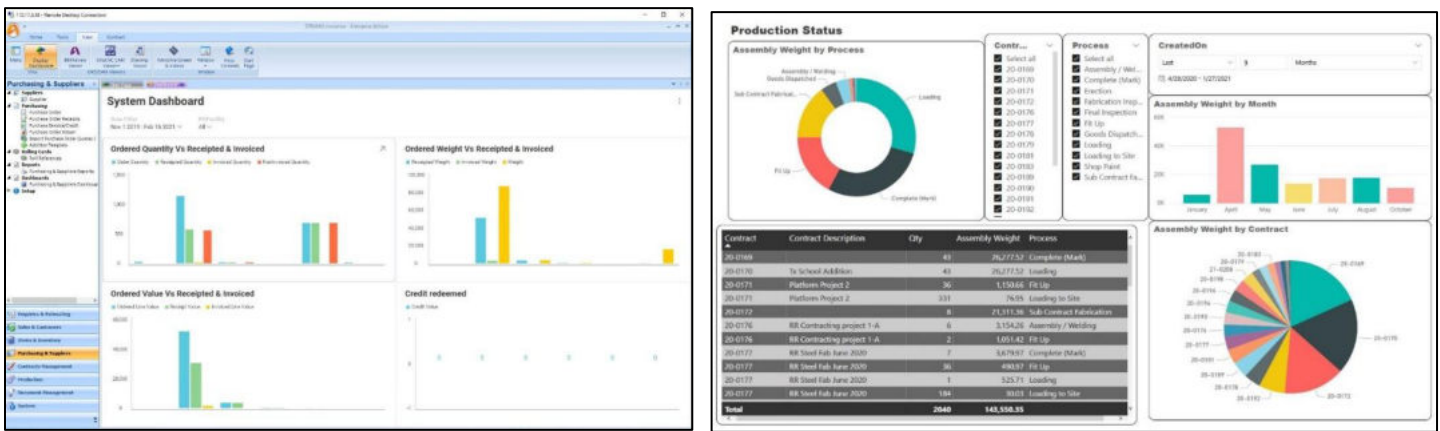
The Road Ahead

The STRUMIS development road map for the next big software release, currently includes three new exciting features.

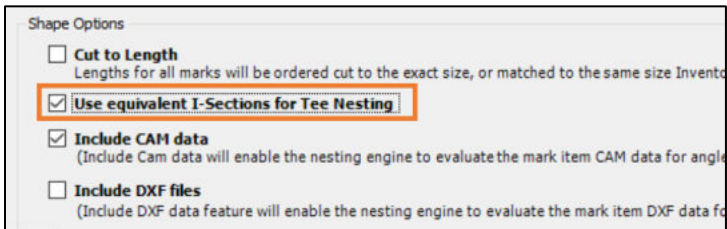
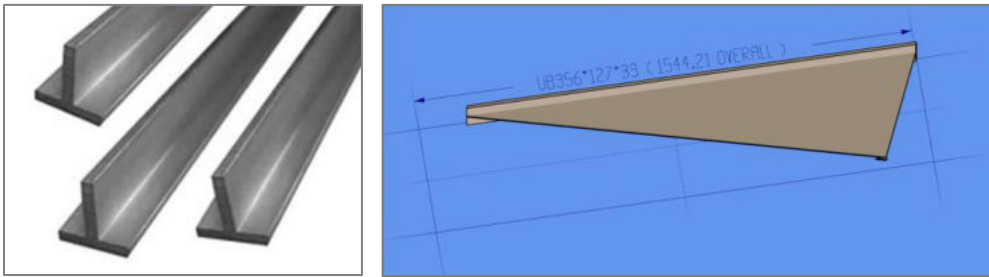
BI Dashboards

New fully customizable BI Dashboards allow for a user friendly and comprehensive display of live data from STRUMIS

- Auto layouts-scale intelligence panels to customize a user's view
- Selections from multiple data pivots
- Definition of chart criteria and hierarchy
- Data used from multiple sources
- Combination with data from finance and ERP systems
- Data export to Excel



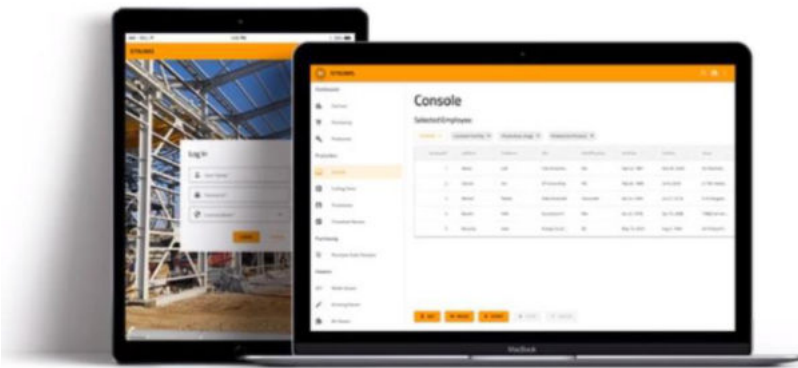
Tee/Haunch Nesting



A new Tee nesting engine available in STRUMIS, will allow for nesting/optimization of Tee shapes and haunches out of standard beam profiles.

Tee profiles can be cut from available equivalent I-section bars from either inventory or supplier/mills lengths making sure that stocks are fully utilized and remnants are kept to a minimum.

Web Services



This feature will allow to expand STRUMIS access on existing integration platforms through APIs, meaning that users can operate STRUMIS from anywhere in the world on any device.

The PRODUCTION CONSOLE will be the first part of STRUMIS that will have this capability.